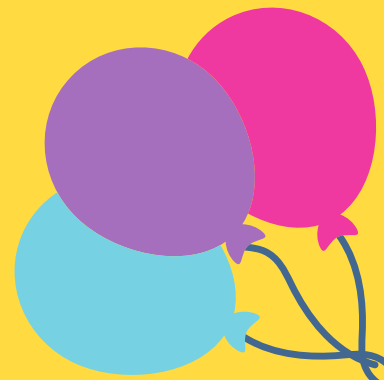
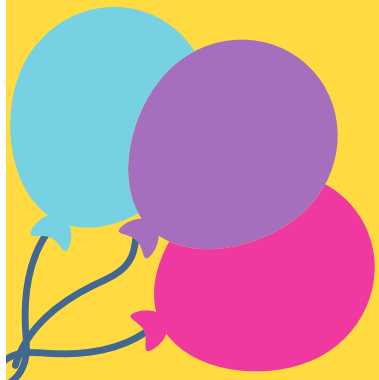


BEYOND BIBS & BOTTLES
PARENT

GUIDEBOOK 2024-2025



Welcome to our center

Thank you for allowing us the privilege of serving your family. It has been our utmost pleasure to provide you with the care and attention you deserve. We strive to create a warm and welcoming environment, and it is an honor to be part of your journey. Your trust and support mean the world to us, and we look forward to continuing to meet your needs with dedication and compassion.

At our institution, we take the safety of your child very seriously. We have implemented a comprehensive set of safety protocols to ensure a secure and nurturing environment for every child in our care. Our staff undergoes rigorous background checks and receive continuous training in first aid, emergency procedures, and child protection policies. Additionally, our facilities are equipped with advanced security systems, including surveillance cameras and secure entry points, to monitor and control access. We also conduct regular safety drills to prepare both our staff and children for any potential emergencies. Your child's well-being is our top priority, and we are committed to providing a safe and supportive space where they can learn and grow.

Mission Statement

At Our Childcare, our mission is to provide a nurturing and stimulating environment where every child can grow, learn, and thrive. We are committed to fostering a safe and inclusive space that promotes the physical, emotional, social, and intellectual development of each child. Through a blend of structured activities and open-ended play, we aim to cultivate curiosity, creativity, and a love for learning. Our dedicated team of caregivers and educators work collaboratively with families to support the individual needs of each child, ensuring they feel valued, respected, and empowered to reach their full potential. At Our Childcare, we believe in laying a strong foundation for lifelong learning and success.

Philosophy

Our childcare philosophy centers around the belief that every child is a unique individual who deserves a nurturing, stimulating, and safe environment to grow and develop. We are committed to fostering a sense of curiosity and a love for learning by providing a balanced mix of structured activities and free play. Our approach emphasizes the importance of social, emotional, physical, and cognitive development, ensuring that children are well-rounded and prepared for future challenges. We believe in the power of positive reinforcement and encourage children to express themselves, explore their interests, and build strong relationships with their peers and caregivers. By partnering with families, we strive to create a supportive community that values inclusivity, diversity, and mutual respect.

CURRICULUM

We believe in tailoring education to meet the unique needs of each child, which is why we incorporate a variety of curricula in our approach. By utilizing multiple plans such as Funshine Express, Experience Learning, and Teaching 2 and 3 Year Olds, we ensure that our educational programs are both flexible and comprehensive. Funshine Express offers engaging, age-appropriate activities that spark curiosity, while Experience Learning focuses on hands-on, experiential learning opportunities that foster critical thinking and problem-solving skills. Teaching 2 and 3 Year Olds provides developmentally appropriate strategies and activities that support early childhood development. This multi-faceted approach allows us to create a nurturing and stimulating environment where every child can thrive and develop a lifelong love of learning.

*Nap
or Rest
is a
requirement*

General Information

Our hours of operation are as follows:

- Monday through Thursday: 7:30 AM to 5:30 PM
- Friday: 7:30 AM to 5:00 PM

We look forward to serving you during these times!

Holidays

Our organization observes several paid holidays throughout the year to ensure our employees can enjoy time with their families and recharge. These holidays include New Year's Eve, New Year's Day, Presidents Day, Veterans Day, Good Friday, Memorial Day, Independence Day (July 4th), Labor Day, Thanksgiving (both Thursday and Friday), Christmas Eve, and Christmas Day. If a holiday falls on a Saturday, our facility will close on the preceding Friday. Conversely, if a holiday occurs on a Sunday, we will close the following Monday.

Additionally, please note that our facility will be closed from July 21st to August 1st, 2025, to prepare for the new school year. This period is a non-paid closing, and we appreciate your understanding and cooperation as we get ready to welcome everyone back for another successful academic year.

DROP OFF / PICK UP

Dear Parents,

We would like to remind you that our cut-off time for drop-offs is 10:00 am. To better accommodate everyone, we kindly ask that you try to schedule appointments later in the day. Please note that we have a low tolerance for late pick-ups. A fee of \$20.00 will be invoiced for any late pick-ups. Our dedicated staff works hard to meet the needs of the children and to maintain the cleanliness of the building. We appreciate your cooperation and understanding.

Thank you,

Beyond Bibs and Bottles Staff

LUNCH

Dear Parents,

We kindly request that each child brings a packed lunch in a Bentgo box. This helps ensure meals are well-organized and easy to manage. Additionally, we will be providing two light snacks each day. Please also send a cup that can remain onsite for your child to use during their time here. Thank you for your cooperation in helping us create a smooth and enjoyable experience for all the children.

Best regards,

[Beyond Bibs and Bottles Staff

TELEVISION

Television can be an invaluable resource for dance enthusiasts, offering a wealth of programs that showcase various styles and techniques, serving as both inspiration and education. For those who prefer the written word, books on dance provide in-depth knowledge about choreography, history, and the physicality of movement. These texts can be essential for understanding the theory and context behind the art form. When it comes to lesson planning, integrating insights from both television and books can create a well-rounded curriculum. TV programs can be used to demonstrate live performances and practical applications, while books can provide the theoretical framework and detailed instructions necessary for mastering different dance styles. Combining these resources can help educators craft engaging and comprehensive lesson plans that cater to a variety of learning styles, ensuring students not only learn the steps but also the rich cultural and historical significance behind them.

MEDIA

We take photographs to capture memories and sometimes share them on our website. Please let us know if your child is not allowed to be included in these photos. Thank you for your understanding and cooperation.

DISCIPLINE POLICY

Discipline is the act of teaching young children appropriate and expected behavior. It involves guiding them to understand the difference between right and wrong, and helping them develop self-control and responsibility. Effective discipline is not about punishment, but rather about setting clear boundaries and consistent rules to create a safe and supportive environment. This approach helps children learn the consequences of their actions and fosters their ability to make positive choices. By using positive reinforcement and modeling good behavior, parents and educators can nurture a child's social and emotional growth, paving the way for a well-adjusted and respectful individual.

TUITION

Thank you for choosing our care services! Please note that we charge a non-refundable registration fee of \$100.00, which is in addition to your regular tuition. To ensure a smooth experience, kindly submit your payments every Monday morning before bringing your toddler to care. For your convenience, payments can be made either in person or online. We appreciate your cooperation and look forward to providing excellent care for your little one. Thank you!

When enrolling your child in a daycare or preschool, it's important to understand that the payment is typically for securing a spot rather than based on attendance. This means that even if your child misses a day or more due to illness, vacation, or other reasons, you are still required to pay the full tuition. This policy ensures that the institution can maintain a stable budget, properly compensate staff, and provide consistent quality of care and education. It also guarantees that your child has a reserved place in the program, which can be crucial given the high demand for quality early childhood education. While this might seem inconvenient at times, it is a common practice and helps support the sustainability and reliability of the childcare service.

Beyond Bibs and Bottles offers a two-week trial period to determine whether their childcare services are a good fit for your child. If you decide to withdraw your child after this initial two-week period, the center requires a two-week notice. Failure to provide this notice will result in being invoiced for an additional two weeks of tuition. This policy ensures that the center can adequately plan and maintain a steady environment for all children in their care.

JUST A NOTE

At our company, we prioritize a respectful and inclusive work environment for all employees. As such, we have a zero-tolerance policy towards any form of disrespect, whether it occurs in person or on social media. Any employee found to be engaging in disrespectful behavior, including harassment, bullying, or derogatory remarks, will face immediate termination. We believe that fostering a culture of mutual respect and professionalism is essential for the well-being of our team and the success of our organization. Let's work together to ensure a positive and supportive workplace for everyone.

For a better understanding of our material, we have provided a video in addition to our guidebook. If you have any further questions, please feel free to contact our director, Reddell Henderson, at 850-741-3777.



Beyond Bibs and Bottles Daycare